

# 10219 Data Sheet

## Type 1,2&3 75V SPD

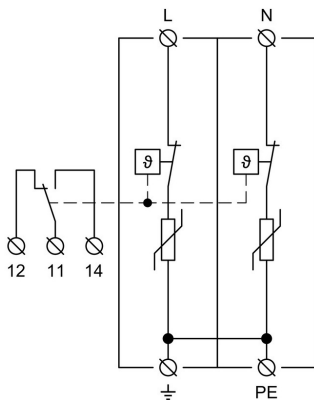
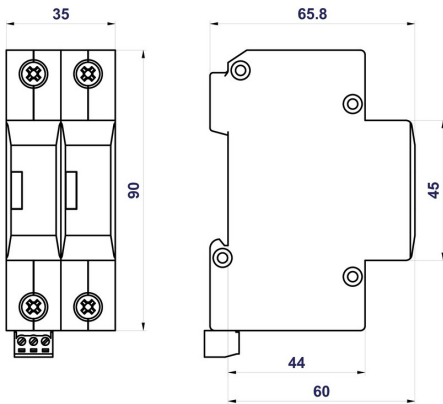
**SURge**  
PROTECTION DEVICES LTD



- Compliant to BS EN 61643-11
- Suitable for TNC-S and TN-S installations
- Designed for 60V installations
- Window Indication
- Remote changeover contacts as standard
- Din rail mountable
- Recommended backup fuse / MCB 63A
- Recommended cable size minimum 16mm



SCAN THE QR CODE FOR THE  
**INSTALLATION  
INSTRUCTIONS**



Technical Data	10219
Maximum Continuous Voltage - $U_c$	75V AC 100V DC
Lightning Impulse Current 10/350 $\mu$ s - $I_{imp}$	12.5kA
Total Lightning Impulse Current 10/350 $\mu$ s - $I_{Total}$	25kA
Nominal Discharge Current 8/20 $\mu$ s - $I_n$	20kA
Maximum Discharge Current 8/20 $\mu$ s - $I_{max}$	50kA
Voltage Protection Level - $U_p$	$\leq 550V$
Response Time - $t_a$	$\leq 25ns$
Tightening Torque	3Nm
Operating Temperature	-40°C to +80°C
Mounting On	35mm DIN rail
Indication of Status	Window & Remote
Classification According to BS EN 61643-11	Type 1, 2 & 3